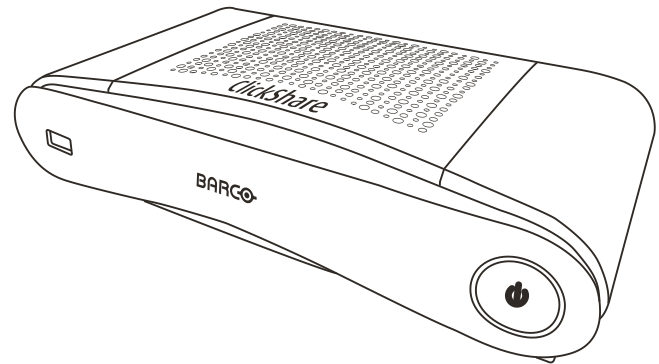


# ClickShare CS-100 series

For CS-100 & CS-100 HUDDLE



Installation manual

# Getting started

# 3

## Overview

- Environmental Condition Check
- Basic Workflow

## 3.1 Environmental Condition Check

### Environment condition check

For installations in environments where the device is subject to excessive dust, then it is highly advisable and desirable to have this dust removed prior to it reaching the device clean air supply. Devices or structures to extract or shield excessive dust well away from the device are a prerequisite; if this is not a feasible solution then measures to relocate the device to a clean air environment should be considered.

It is the customer's responsibility to ensure at all times that the device is protected from the harmful effects of hostile airborne particles in the environment of the device. The manufacturer reserves the right to refuse repair if a device has been subject to negligence, abandon or improper use.

### Ambient temperature conditions

Max. ambient temperature : +40°C or 104°F

Min. ambient temperature: +0°C or 32°F

Storage temperature: -10°C to +60°C (14°F to 140°F)

### Humidity Conditions

Storage: 0 to 90% relative humidity, non-condensing

Operation: 0 to 85% relative humidity, non-condensing

### Environment

Do not install the device in a site near heat sources such as radiators or air ducts, or in a place subject to direct sunlight, excessive dust or humidity. Be aware that room heat rises to the ceiling; check that temperature near the installation site is not excessive.

## 3.2 Basic Workflow

### Before using CS-100, CS-100 HUDDLE

1. Unpack the ClickShare components and accessories from the box.  
For a detailed overview of the content of the CS-100, CS-100 HUDDLE box, see "About the CS-100, CS-100 HUDDLE", page 24
2. Install the Base Unit in the meeting room using one of the 2 possible installation methods.  
For more information on the installing procedures, see "CS-100, CS-100 HUDDLE Installation", page 33
3. Connect the video cable between the Base Unit and the display.
4. Connect the audio from the Base Unit to the meeting room's sound system (only required for audio via jack).
5. If configuration via a network is needed, connect a network cable between the Base Unit and the local network (if not yet done to power the Base Unit).
6. Connect the Base Unit to the mains power.  
For more information "Power connection", page 37,
7. If desired, configure CS-100, CS-100 HUDDLE via the Configurator.  
For more information on the different ways to configure CS-100, CS-100 HUDDLE, see "CS-100, CS-100 HUDDLE Configurator", page 43.



For more information on using CS-100, CS-100 HUDDLE, refer to the CS-100, CS-100 HUDDLE User Guide. This manual can be found on Barco's website [www.barco.com/clickshare](http://www.barco.com/clickshare).

# CS-100, CS-100 HUDDLE Installation

# 4

## Overview

- Installation methods for the Base Unit
- Table mounting
- Wall mounting
- Video signal connections to the Base unit
- Audio connection
- LAN connection
- Power connection

## 4.1 Installation methods for the Base Unit



For optimal performance, install the Base unit close to the display and avoid obstacles between the Base unit and the Buttons.

### Introduction to the installation methods

The Base unit can be installed in different ways in a meeting room.

- Table mount
- Wall mount

At the side of the Base Unit, a Kensington lock is foreseen.

## 4.2 Table mounting

### Overview

Put the Base Unit directly on the meeting room table.

The total weight of the Base Unit is 600 g.

## 4.3 Wall mounting

### About wall mounting

No mounting bracket is needed to install the Base unit on the wall. The Base Unit can be mounted in any position on the wall, but it is preferred to mount it with the connections downwards.

The total weight of the Base Unit is 600 g.

### Required tools

- a drill (type of drill depends on the type of wall)
- Screwdriver (depending on the used screws)

### Required parts

- 2 mounting screws, maximum head diameter of 6.5 mm
- 2 plugs

### How to install

1. Drill two holes in the wall or ceiling as indicated on the drawing.

Horizontal distance : 162 mm,

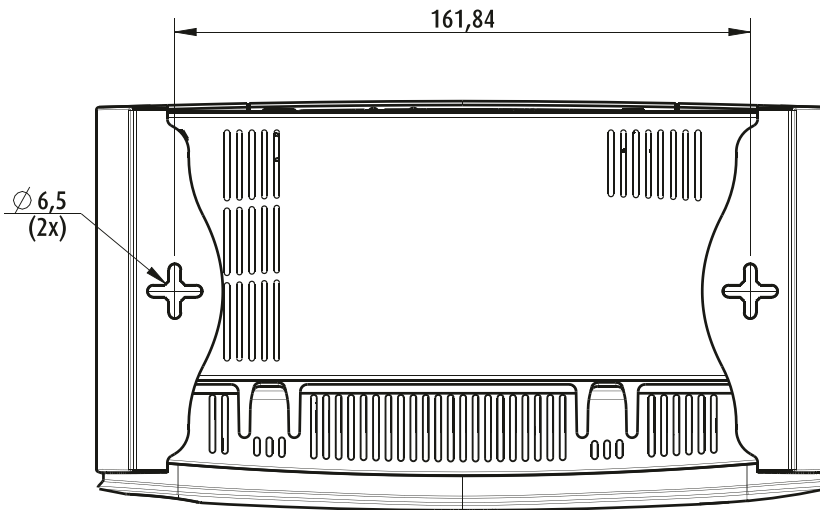


Image 4-1: Mounting holes

2. Insert a plug in each hole (if needed, depends on the wall or ceiling type) and drive in 2 screws. Do not drive in the screws completely.



*Note:* Mounting screws and plugs are not included in the CS-100, CS-100 HUDDLE box . The type of screws and plugs depend on the type of wall (stone, wood, plasterboard, ...) you are mounting the Base Unit to. Make sure the head of the screw is not larger than the hole in the bottom plate of the Base Unit (< 6.5 mm).

3. Hook the Base Unit on both screw heads and slide the Base Unit downwards until it is fixed.

## 4.4 Video signal connections to the Base unit

### About Video signal connection

A single screen can be connected to the Base unit.

To connect a display, an HDMI connection should be made between the Base Unit and the display.

### To connect

1. Connect the Base unit to the display using a display cable.



*Note:* No display cables are included in the ClickShare box at purchase.

When setting up a display configuration, connect the HDMI cable to the display. When necessary, use an adapter piece to connect to a display port or a DVI port on the display side.



Image 4-2: Display connection

## 4.5 Audio connection

### About audio

The ClickShare Button captures the audio output of the user's laptop and sends it to the Base Unit together with the video signal. The audio will be output at line levels from the mini jack socket (3.5mm) and via the HDMI connector.

It is up to the user to decide whether or not to send the audio signal together with the video signal. The user can decide this by using the same tools as he would to control the laptop's speakers or a headphone: the audio controls of the operating system (eg for Windows: Control Panel > Sounds and audio devices) or the physical buttons on the keyboard of their laptop (mute/unmute, lower volume, higher volume).

There will be synchronization between the audio and video signal.

### Audio via HDMI

When your display is connected via HDMI and it supports audio, a separate audio connection is not necessary. The audio signal is sent together with the video signal to the display.

### How to connect separate audio

1. Connect an audio cable with mini jack socket (3.5mm) into the audio out of the Base unit.
2. Connect the other side to the meeting room's sound system.



Audio output needs to be selected in the Configurator, for more info, see "Audio settings", page 59

### Sound is not sent out

In some Windows environments sound is not sent out. This can be solved as follow:

1. Right click on the sound icon in the system tray and select *Playback devices*. The *Sound* window opens.
2. Select Speakers ClickShare, select *Set default* and click **Apply**.

## 4.6 LAN connection

### About LAN connection

The Base Unit can be connected to a local network or directly to a laptop. For normal operation, a LAN connection is not necessary.

The LAN connection can be used:

- to configure your CS-100, CS-100 HUDDLE Base unit
- to update the software

- for maintenance purposes

### How to connect

1. Insert a network cable with RJ-45 connector into the LAN port.
2. Connect the other side to a LAN.

## 4.7 Power connection

### About power

This product is intended to be supplied by a UL Listed Power Unit marked “Class 2” or “LPS” or “Limited Power Source” with output rated 12 VDC 1.5A min.

An external power adapter is delivered with the product.



Once the Base unit is powered, it starts up. Then the power button can be used to switch on or off.

### How to connect the external power adapter.

1. Plug the barrel connector of the power adapter into the power input of the Base unit.
2. Slide a power input adaptor piece (US, CN, EU or UK) on the power adapter of the ClickShare . Use the one which is applicable in your country.
  1. Slide down the button on the adapter (1).
  2. Insert the latch (2) of the adapter piece into notch (3)

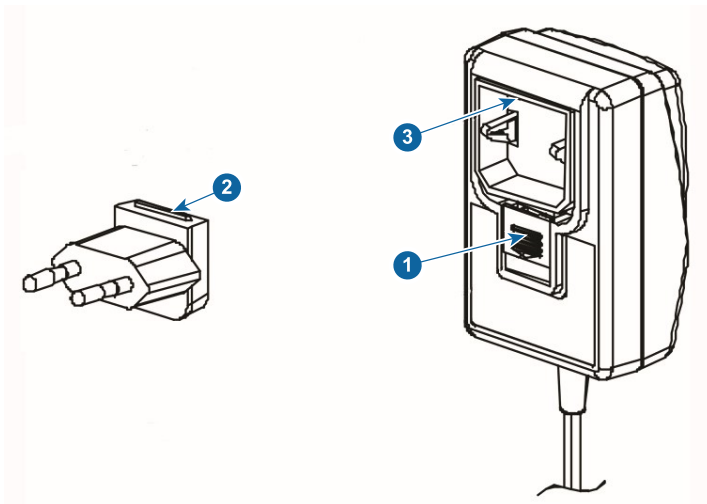


Image 4-3: Mounting adapter piece



Image 4-4: Type A



Image 4-5: Type A



Image 4-6: Type C



Image 4-7: Type G



Image 4-8: Type I

3. Connect the power cable to the wall outlet.

# Preparing the buttons

# 5

## Overview

- Pairing
- ClickShare Extension Pack
- ClickShare Extension Pack installer

## 5.1 Pairing

### Pairing of the Buttons with the Base Unit

To be able to use a Button it should be assigned to the Base Unit you are using. This process is called pairing. By default, the Button(s) delivered with the Base Unit are already paired to that specific Base Unit.

In case you buy additional Buttons or when a Button should be assigned to another Base Unit, the Button needs to be paired (again). The Button software update runs in the background and will not impact users while using the system. When downgrading or updating to an older version of the Base Unit software the Buttons need to be paired manually to update their software and that only in case the Button update over Wi-Fi is disabled.



A Button can only be paired to one Base Unit at a time.  
The Button will always make connection to the Base Unit it was last paired to.

Pairing a Button can be done in two ways:

- by plugging the Button to the Base Unit.
- by using the Button Manager application running on your laptop.

### To pair a Button to the Base unit by plugging in

1. Insert the Button in one of the USB port available on the Base Unit you are using (image is only given as example, all USB connectors can be used).



*Note:* For some ports or Buttons, it can be necessary to use a convertor.

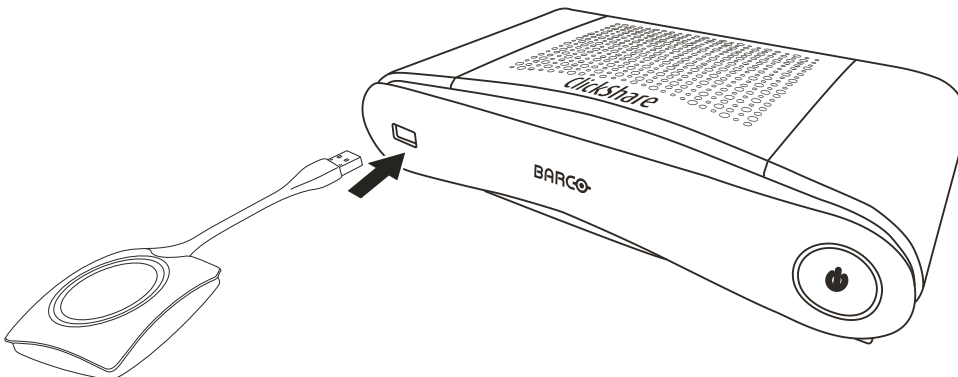


Image 5-1: Pair button

Both the LEDs of the Button and the LEDs of the Base Unit are blinking white. This means pairing is in progress.

The Base Unit automatically checks whether the software of the Button is up to date. If not, the Base Unit updates the Button software. This may take more time.

During the pairing and update process, a small status bar is display.

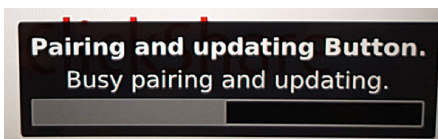


Image 5-2: Pairing message

The result of the pairing process can be as follows:

- When the LEDs become static white, the Button is paired to the Base Unit, but no software update was needed. You can unplug the Button from the Base Unit.
- When the LEDs become static red, the Button is paired to the Base Unit and the software update has finished. You can unplug the Button from the Base Unit.

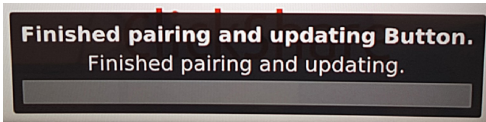


Image 5-3: Pairing finished

2. Unplug the Button from the Base Unit.  
The Button is now ready for use.

### To pair a Button to the Base Unit using the Button Manager

Via the Button Manager client application running on your laptop, up to 4 Buttons can be paired simultaneously to a Base Unit without plugging the Buttons to the Base Unit. The Buttons are plugged in to your laptop. For more information about the Button Manager, consult the Button Manager's user guide which can be downloaded from Barco's website.

## 5.2 ClickShare Extension Pack

### About

The ClickShare Extension Pack is a collection of tools to upgrade your ClickShare user experience. This Extension Pack contains the ClickShare Launcher service and a driver to enable the Extended Desktop functionality. Both tools will be installed by default. To change the default behavior of the installer, the installer will need to be executed with command line parameters.

The ClickShare Extension Pack can be installed by the end user manually, pre-installed on your company's laptop image or deployed company-wide with SCCM or other tools.

The ClickShare Extension Pack can be used in combination with a Button and/or with the ClickShare desktop app.

The latest extension pack can be downloaded via <http://www.barco.com/en/product/clickshare-extension-pack>

## 5.3 ClickShare Extension Pack installer

### Interactive setup

In this setup, the user runs the installer which will install the ClickShare Extension Pack on his computer after the user accepts the EULA.

After the setup finished, the ClickShare launcher will be started automatically. The Extended desktop driver can only be used after the user reboots his computer.

### Starting the setup

1. Download the ClickShare Extension Pack (download via <http://www.barco.com/en/product/clickshare-extension-pack>).
2. Unzip the downloaded file.
3. Click *ClickShare-Extension-Pack.msi* to start the installation.

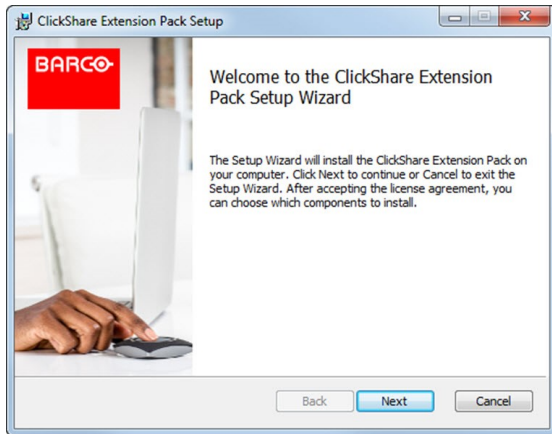


Image 5-4

4. Click **Next**, accept the License Agreement and click **Next** to continue.  
If necessary, follow the on screen instructions.

### Silent setup

In this setup, a user or an IT admin can install the ClickShare Extension pack using the Windows command prompt. Following is an example of a silent installation (version numbers are only given as example, always check Barco's web for the latest version):

Launcher only install:

```
msiexec. exe /i ClickShare-Extension-Pack-01.00.02.0003. msi ACCEPT_EULA=YES  
INSTALLFOLDER=C:\ LAUNCH_APP=YES /qn
```

Extended desktop only install :

```
msiexec. exe /i ClickShare-Extension-Pack-01.00.02.0003. msi ACCEPT_EULA=YES  
ADDLOCAL=ExtendedDesktopDriverFeature INSTALLFOLDER=C:\ LAUNCH_APP=YES /qn
```

Full install (launcher + extended desktop):

```
msiexec. exe /i ClickShare-Extension-Pack-01.00.02.0003. msi ACCEPT_EULA=YES  
ADDLOCAL=ALL INSTALLFOLDER=C:\ LAUNCH_APP=YES /qn
```



The computer will reboot. This can be suppressed with /norestart. A reboot will be needed afterwards for the extended desktop feature to be working. In case the end-user should decide if they want to reboot, /promptrestart /QB!+ can be used (basic UI, no cancel option, but prompt to reboot)

### Parameter Description

ACCEPT_EULA	This parameter shows that the installer accepts the EULA text as is. This parameters must be set to YES in order to continue to the installation.
INSTALLFOLDER	This parameter specifies the installation directory for ClickShare launcher. If not specified, the default folder will be the Program Files folder.
LAUNCH_APP	The ClickShare launcher application will be started right after the installation finishes if this parameter is set to YES. Otherwise, the launcher application will not be started.
/qn	This parameter indicates that the installation will be done in silent mode, meaning that there will be no visible windows during the installation.
ADDLOCAL	This parameter indicated the type of the installation. No parameter added, installs only the launcher.

### Windows environment variable

The variable to be used is CLICKSHARE\_LAUNCHER\_CLIENT\_PATH. The value should be the path to the client software.

# Firmware updates

# 7

## 7.1 Firmware update



During the first startup of the unit and when there are 18 months passed after a last update, a typical wallpaper will be displayed which asks to update the unit.



Image 7-1

### About Firmware updates

There are different ways to update the Base Unit software:

- via the Configurator, for more information, see “Firmware Update”, page 86.
- automatic update when connected to the network together with the XMS or CMGS management solution.
- by copying the software on a USB stick.
- automatic update when connected in network together with the Collaboration Management Suite (only for CSE devices). For more information consult the Collaboration Management Suite’s user guide which can be downloaded from Barco’s website ( [www.barco.com/clickshare](http://www.barco.com/clickshare) ).

### To update the Base Unit software by copying the software on a USB stick

1. Download the latest version of the firmware from Barco's website, [www.barco.com/clickshare](http://www.barco.com/clickshare). Click on **Support** and select the update firmware button of your device type.
2. Unzip the zip file.
3. Copy the ENC file to a USB stick.  
You can have multiple firmwares for multiple device types on the same stick.
4. Insert the USB stick into the USB port at the front of the Base Unit.
5. Follow the instructions on the meeting room screen.
6. When the on-screen message indicates that the process is finished, remove the USB stick.

The Base Unit reboots.

# Troubleshooting

# 8

## 8.1 Troubleshooting list

### Problem solving

Locate the problem you are experiencing in the table below and apply the solution.

Problem	Cause	Solution
Quality of the image on the meeting room display is not satisfactory	The quality or length of the cable between the Base Unit and the display or the connection between these two.	<ul style="list-style-type: none"> <li>• Replace the cable.</li> <li>• Use another cable.</li> </ul>
Users have a bad wireless connection. The connection from the Button to the Base Unit keeps falling away.	Wireless congestion	<ul style="list-style-type: none"> <li>• Use a WiFi scanner to find a free wireless channel and select it via the web interface. You can use commercial as well as free online tools such as inSSIDer or Xirrus for this.</li> </ul>
	Low signal strength	<ul style="list-style-type: none"> <li>• Put the Base Unit closer to the meeting room table.</li> <li>• Remove or limit as much as possible all obstructions between the Buttons and the Base Unit.</li> </ul>
Configurator is not accessible	Browser	<ul style="list-style-type: none"> <li>• Use another browser (version).</li> <li>• Check the browser settings.</li> </ul>
	No connection	<ul style="list-style-type: none"> <li>• There are three methods to access the web interface. Refer to the corresponding chapter of the documentation.</li> <li>• Check the proxy settings</li> </ul>
Users do not get a ClickShare drive when inserting the Button in their laptop.	<ul style="list-style-type: none"> <li>• No automatic refresh of drives</li> <li>• Windows tries to assign the ClickShare drive to an already reserved drive letter</li> </ul>	<ul style="list-style-type: none"> <li>• Refresh your view on the laptop.</li> <li>• Use Microsoft Windows Disk Management to assign it to a free drive letter.</li> </ul>
	Bad connection at USB port on the laptop	<ul style="list-style-type: none"> <li>• Reconnect to the USB port.</li> <li>• Try another USB port.</li> <li>• Reboot the laptop.</li> </ul>
	<ul style="list-style-type: none"> <li>• Some types of USB devices might be blocked as a company policy.</li> <li>• USB port settings on the laptop might limit the usage of high power USB devices when on battery power.</li> </ul>	If possible, change the USB port policy on the laptop.
Low video performance	Laptop performance	<ul style="list-style-type: none"> <li>• Lower the screen resolution of the laptop.</li> <li>• Disable the hardware acceleration for video.</li> <li>• Use only a part of the display to show the video.</li> <li>• Right click ClickShare icon in system tray and click on Capture mode to toggle the current setting..</li> </ul>
	Wireless connectivity	See “Users have bad connectivity”

Problem	Cause	Solution
Video is not shown on screen	Player uses overlays	Disable the usage of overlays in the preferences of the video player.
Some programs of Windows are not shown on the display	Use of overlays, 3D or hardware acceleration in the GPU	<ul style="list-style-type: none"> <li>• Disable overlays or hardware acceleration in the GPU.</li> <li>• Disable AeroGlass in Windows 7</li> <li>• Upgrade the Base Unit to the latest software version.</li> </ul>
When using Windows 7 the following message about the Windows Aero color scheme appears: "Windows has detected your computer's performance is slow. This could be because there are not enough resources to run the Windows Aero color scheme. To improve...".	ClickShare uses resources from the GPU. In combination with other programs which do so, Windows 7 sometimes shows this message suggesting to disable Aero to improve the performance of your laptop.	It is safe to ignore this message and choose 'Keep the current color scheme'.
Your screen is not shown on the display when pressing the Button	<p>You are the second person that wants to share content. Only one screen can appear simultaneously</p> <p>The ClickShare software is not running.</p>	<p>Click and hold the button for 2 seconds to use the Show me full screen function.</p> <p>Go to the ClickShare drive and run the software.</p>
Your content is removed from the display and the LEDs on the button are blinking white	Connection to the Base Unit is lost.	<p>ClickShare tries to restore the connection automatically. If it fails, the LEDs on the Button start blinking red.</p> <p>Unplug the button from your laptop and try a new button.</p>
Nothing is shown on the displays at all.	<p>The displays are switched off.</p> <p>The display cable is not correctly connected</p> <p>The display does not recognize or is not able to display the Base Unit output resolution.</p> <p>The Base Unit is in standby mode</p>	<p>Switch on the displays.</p> <p>Insert the display cable to the display and the Base Unit.</p> <p>Change the corresponding setting via the web interface.</p> <p>Briefly push the standby button on the Base Unit or insert a button and run the ClickShare software.</p>
Bad WiFi connectivity	<p>Congestion of the wireless channel</p> <p>Metal cabinets, walls, construction elements, ... can cause reflections deteriorating the wireless signal.</p> <p>Obstructions between Buttons and Base Unit cause lowering of the wireless strength and quality.</p>	<p>Use wireless network scan tools to look for free or the least congested channels.</p> <p>Move the Base Unit to another place in the room.</p> <p>Avoid placing it inside cabinets, false ceiling, below the table, behind a wall, in another room, ....</p>

Problem	Cause	Solution
		Check out the ClickShare White paper on WiFi See <a href="http://www.barco.com/clickshare">www.barco.com/clickshare</a> .
Configurator shows error in the processes “WiFi Access Point Daemon” and/or “DHCP Server”	Configuration file is corrupted	In the Configurator, goes to Support & Updates, click on Troubleshoot and press “Reset to factory defaults”.
ClickShare Base Unit does not start up correctly	Configuration file is corrupted	In the Configurator, goes to Support & Updates, click on Troubleshoot and press “Reset to factory defaults”.
No LAN connection with the Base Unit	Wrong IP address	IP address is not within your LAN range. DHCP is not enabled.
No WiFi connection with Base Unit	SSID not correct	Enter the correct SSID

### Barco knowledge base and YouTube videos

Go to the product page on Barco’s website and select in the right column **Support**. You will get access to Barco’s *Knowledge base* and *Latest tutorial videos*. For more YouTube videos, consult <https://www.youtube.com/user/barcoTV> and select ClickShare.



# Environmental information

# 9

## 9.1 Disposal information

### Disposal Information

Waste Electrical and Electronic Equipment



This symbol on the product indicates that, under the European Directive 2012/19/EU governing waste from electrical and electronic equipment, this product must not be disposed of with other municipal waste. Please dispose of your waste equipment by handing it over to a designated collection point for the recycling of waste electrical and electronic equipment. To prevent possible harm to the environment or human health from uncontrolled waste disposal, please separate these items from other types of waste and recycle them responsibly to promote the sustainable reuse of material resources.

For more information about recycling of this product, please contact your local city office or your municipal waste disposal service.

For details, please visit the Barco website at: <http://www.barco.com/AboutBarco/weee>

### Disposal of batteries in the product



This product contains batteries covered by the Directive 2006/66/EC which must be collected and disposed of separately from municipal waste.

If the battery contains more than the specified values of lead (Pb), mercury (Hg) or cadmium (Cd), these chemical symbols will appear below the crossed-out wheeled bin symbol.

By participating in separate collection of batteries, you will help to ensure proper disposal and to prevent potential negative effects on the environment and human health.

## 9.2 Rohs compliance

### Turkey RoHS compliance



Türkiye Cumhuriyeti: AEEE Yönetmeliğine Uygundur.

[Republic of Turkey: In conformity with the WEEE Regulation]

### 中国大陆 RoHS – Chinese Mainland RoHS

根据中国大陆《电器电子产品有害物质限制使用管理办法》（也称为中国大陆RoHS），以下部分列出了Barco产品中可能包含的有毒和/或有害物质的名称和含量。中国大陆RoHS指令包含在中国信息产业部MCV标准：“电子信息产品中有毒物质的限量要求”中。

According to the “Management Methods for the Restriction of the Use of Hazardous Substances in Electrical and Electronic Products” (Also called RoHS of Chinese Mainland), the table below lists the names and contents of toxic and/or hazardous substances that Barco’s product may contain. The RoHS of Chinese Mainland is included in the MCV standard of the Ministry of Information Industry of China, in the section “Limit Requirements of toxic substances in Electronic Information Products”.

零件项目(名称) 有毒有害物质或元素  
Component Name Hazardous Substances or Elements

	铅 (Pb)	汞 (Hg)	镉 (Cd)	六价铬 (Cr6+)	多溴联苯 (PBB)	多溴二苯醚 (PBDE)
印制电路配件	x	0	x	0	0	0

Printed Circuit Assemblies 电(线)缆	x	0	x	0	0	0
Cables 底架	x	0	x	0	0	0
Chassis 电源供应器	x	0	x	0	0	0
Power Supply Unit 文件说明书	0	0	0	0	0	0
Paper Manuals						

本表格依据SJ/T 11364的规定编制

This table is prepared in accordance with the provisions of SJ/T 11364.

O: 表示该有毒有害物质在该部件所有均质材料中的含量均在 GB/T 26572 标准规定的限量要求以下。

O: Indicates that this toxic or hazardous substance contained in all of the homogeneous materials for this part is below the limit requirement in GB/T 26572.

X: 表示该有毒有害物质至少在该部件的某一均质材料中的含量超出 GB/T 26572 标准规定的限量要求。

X: Indicates that this toxic or hazardous substance contained in at least one of the homogeneous materials used for this part is above the limit requirement in GB/T 26572.

在中国大陆销售的相应电子信息产品 (EIP) 都必须遵照中国大陆《电子电气产品有害物质限制使用标识要求》标准贴上环保使用期限 (EFUP) 标签。Barco产品所采用的EFUP标签 (请参阅实例, 徽标内部的编号用于指定产品) 基于中国大陆的《电子信息产品环保使用期限通则》标准。

All Electronic Information Products (EIP) that are sold within Chinese Mainland must comply with the "Marking for the restriction of the use of hazardous substances in electrical and electronic product" of Chinese Mainland, marked with the Environmental Friendly Use Period (EFUP) logo. The number inside the EFUP logo that Barco uses (please refer to the photo) is based on the "General guidelines of environment-friendly use period of electronic information products" of Chinese Mainland.



Image 9-1

### 限用物質含有情況標示聲明書 (Declaration of the Presence Condition of the Restricted Substances Marking) — Taiwan RoHS compliance

設備名稱： 影音共享控制中心， 型號 (型式)： CS-100

Equipment name: wireless presentation system, Type designation: CS-100

限用物質及其化學符號						
Restricted substances and its chemical symbols						
單元	鉛	汞	鎘	六價鉻	多溴聯苯	多溴二苯醚
Unit	Lead (Pb)	Mercury (Hg)	Cadmium (Cd)	Hexavalent chromium (Cr6+)	Poly-brominated biphenyl (PBB)	Poly-brominated diphenyl ethers (PBDE)
電路板	—	○	—	○	○	○
Printed Circuit Assemblies						

電 (線) 纜 Cables	—	○	—	○	○	○
機箱 Chassis	—	○	—	○	○	○
電源供應器 Power Supply Unit	—	○	○	○	○	○

備考1. “超出0.1 wt %”及“超出0.01 wt %”係指限用物質之百分比含量超出百分比含量基準值。

Note 1 : “Exceeding 0.1 wt %” and “exceeding 0.01 wt %” indicate that the percentage content of the restricted substance exceeds the reference percentage value of presence condition.

備考2. “○”係指該項限用物質之百分比含量未超出百分比含量基準值。

Note 2 : “○” indicates that the percentage content of the restricted substance does not exceed the percentage of reference value of presence.

備考3. “—”係指該項限用物質為排除項目。

Note 3 : The “—” indicates that the restricted substance corresponds to the exemption.

## 9.3 Production address

### Factory

Barco N.V.  
12F, Citychamp Building, No. 12, Tai Yang Gong Zhong Lu, Chaoyang District, Beijing, P.R.C

### Made in information

The made in country is indicated on the product ID label on the product itself.

### Production date

The month and year of production is indicated on the product ID label on the product itself.

## 9.4 Importers contact information

### Contact

To find your local importer, contact Barco directly or one of Barco's regional offices via the contact information given on Barco's web site, [www.barco.com](http://www.barco.com).